



Mark Hows  
Cambridgeshire Mammal Group

# British Shrew ID – Common Shrews

## Common Shrew – *Sorex araneus*

**ID Features:-** Tricolour in appearance, dark brown on top but can be almost black, pale brown sides with pale underbelly. Thin pointed nose, small eyes and ears. 10% of population have white ear tufts like water shrews

**Size:-** 48-80mm, tail approx. 60% of body length

**Weight:-** 5-14g

**Distribution:-** All of UK but absent from Ireland



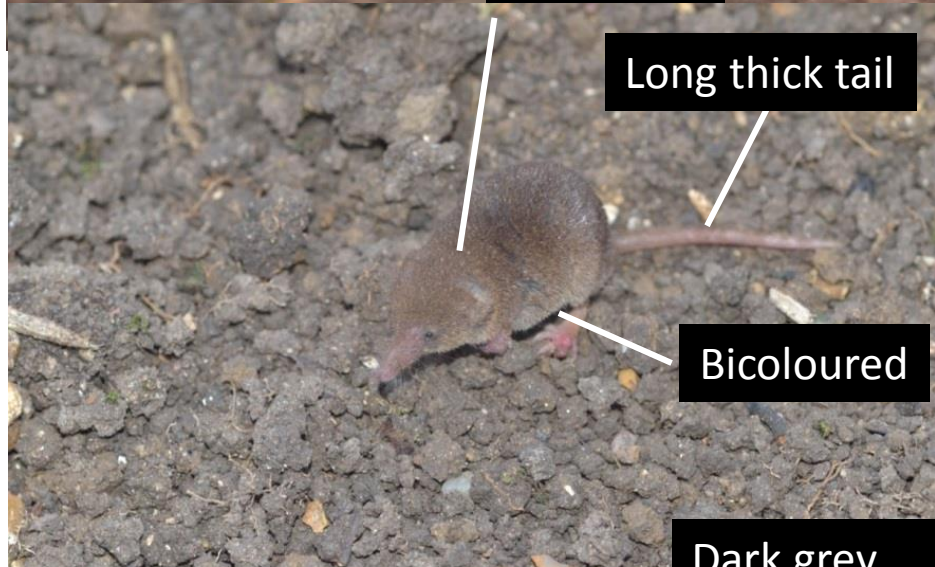
## Pygmy Shrew - *Sorex minutus*

**ID Features:-** Bicoloured in appearance dark brown on top, dirty white underside. Thin pointed nose, small eyes and ears. Smaller than common shrew but tail is thicker and proportionally longer.

**Size:-** 40-60mm, tail approx. 75% length of body

**Weight:-** 2.4-6.1g

**Distribution:-** All of UK and Ireland apart from some Scottish islands



## Water Shrew - *Neomys fodiens*

**ID Features:-** Jet black upper fur, but can be dark grey with a dirty yellow / white underbelly. Thick pointed nose, small eyes and ears. Most have a tuft of white hairs on ears and white hairs around eyes. Distinctive stiff white hairs on the margins of the feet, and underside of the tail.

**Size:-** 70-96mm, tail approx. 75% length of body

**Weight:-** 12-18g

**Distribution:-** All of UK absent from Ireland and some Scottish islands

