



Mark Hows
Cambridgeshire Mammal Group

Brown Rat / Water Vole ID

Brown Rat – *Rattus norvegicus*

ID Features:- Reddish/greyish brown shaggy fur. Long scaly tail. Prominent naked ears. Pointed nose.

Size:- 150-270mm, tail approx. 100% of body length

Weight:- 200-600g

Distribution:- All of UK

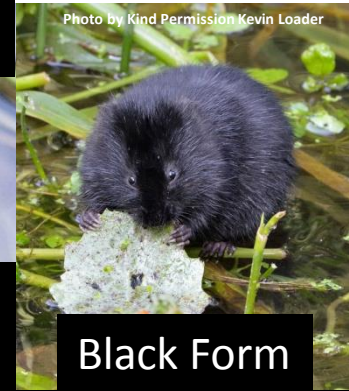
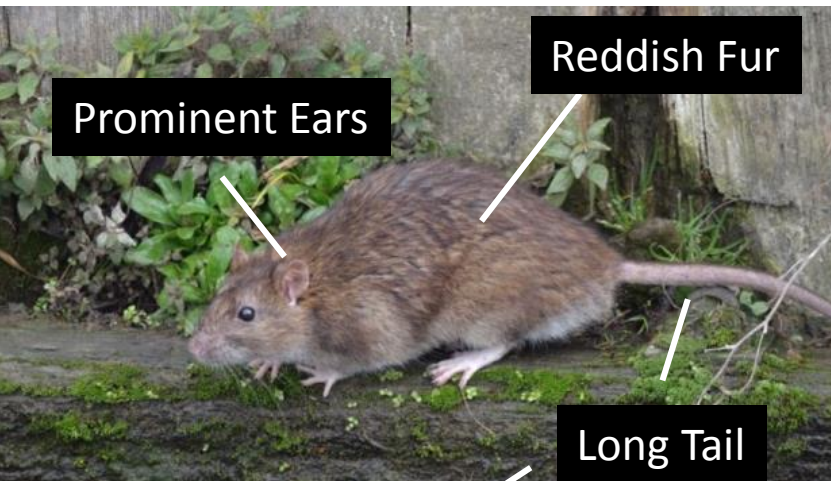
Water Vole - *Arvicola terrestris*

ID Features:- Reddish to black fur. Hairy tail. Smaller rounded ears. Blunt nose.

Size:- 90-115mm, tail approx. 50% length of body

Weight:- 150-300g

Distribution:- All of UK apart from some Scottish islands



Chocolate
Brown to Black
Fur

