



British Isles – Deer ID - I

Roe Deer – *Capreolus capreolus*

ID Features:- Uniform reddish brown fur in summer and greyer in winter. Black nose and white chin are distinctive. Distinctive white tail patch small tail. Small upright antlers with three points maximum.

Size:- 63-69cm at the shoulder

Weight:- 18-27kg

Distribution:- Most parts of the mainland British Isles.

Fallow Deer – *Dama dama*

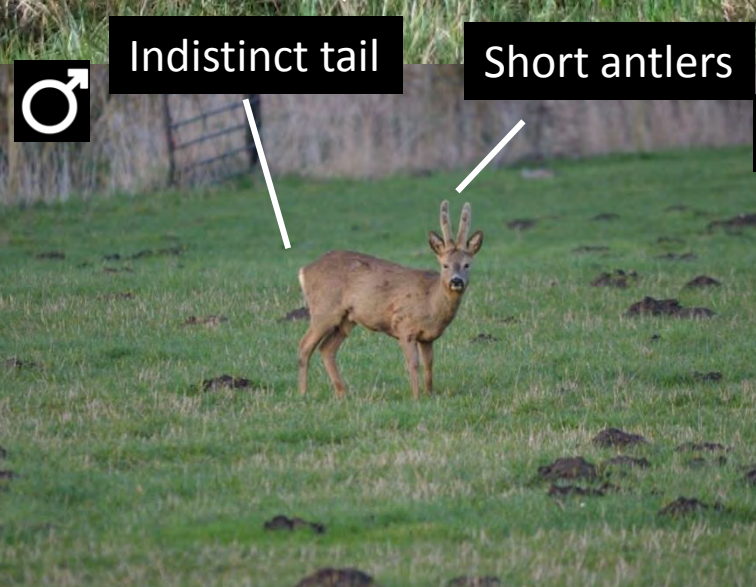
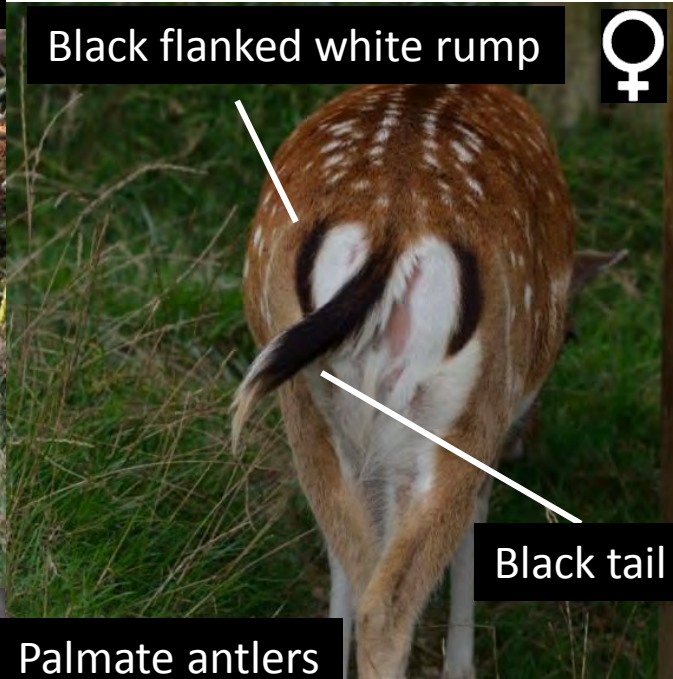
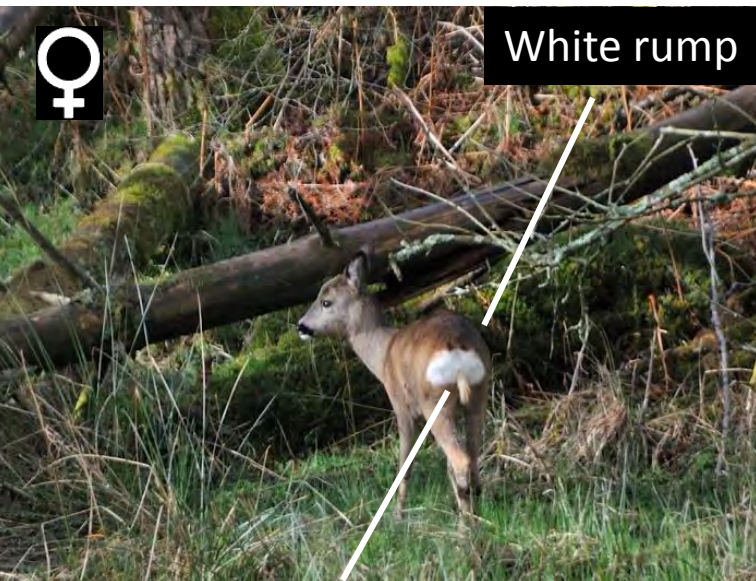
ID Features:- Usually reddish brown with white spots, but white and black colour morphs also exist as do intermediate colouration. The tail is long and black surrounded by a white rump patch flanked in black. Characteristic large palmate antlers.

May resemble Sika in summer coat.

Size:- 85-100cm at the shoulder

Weight:- 40-80kg

Distribution:- Widespread in England but patchy distribution in Scotland, Wales and Ireland.



British Isles – Deer ID - II



Red Deer – *Cervus elaphus*

ID Features:- Uniform reddish brown summer coat which turns grey brown in winter. They have a very distinctive long tail, longer than all other deer species. The antlers are spectacularly large. Can hybridize with Sika.

Size:- 110-120cm at the shoulder

Weight:- Up to 230kg

Distribution:- Mostly Scotland, but populations in the moors of the southwest, New Forest, East Anglia and the Lake District. Also present in a few parts of Ireland.

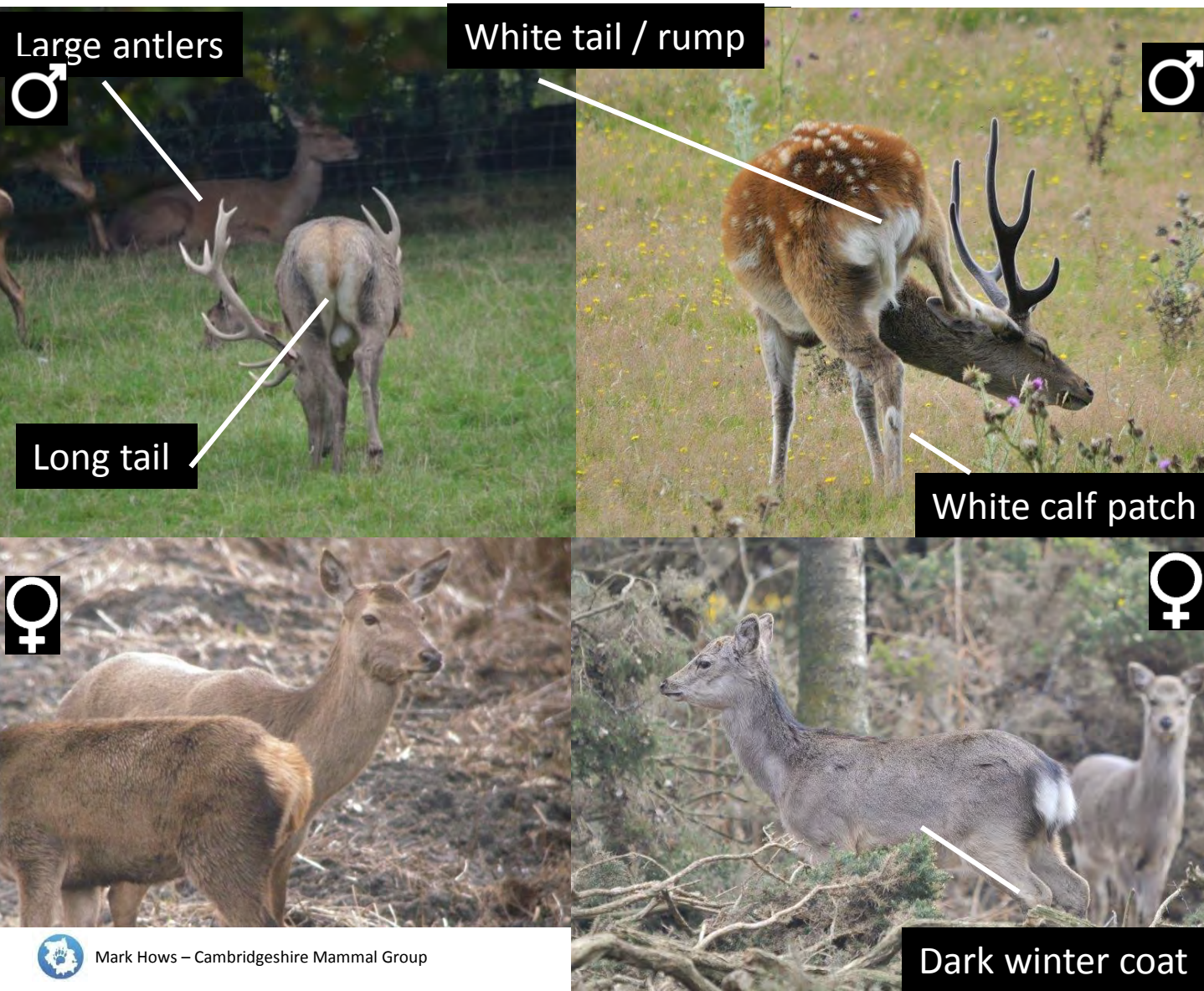
Sika – *Cervus nippon*

ID Features:- Summer coat very similar to fallow deer, the winter coat is dark grey/brown. A pure white tail and rump. The antlers generally have a maximum of 4 points. Sika have characteristic white patches on the back of the calf - not present in any other deer. Can hybridize with red deer.

Size:- 80-100cm at the shoulder

Weight:- 40-60kg

Distribution:- Scotland and Dorset are the strongholds but there are populations in Ireland, Northern England and East Anglia.





British Isles – Deer ID - III

Muntjac – *Muntiacus reevesi*

ID Features:- Reddish brown summer coat turns darker in winter. The head and neck are lighter. Males and females have different markings on the head and males have very small antlers. They have obvious scent glands underneath the eyes. The tail uniform in colour hides a white patch which is revealed when the deer runs.

Size:- 45-52cm at the shoulder

Weight:- 12-15kg

Distribution:- In England mainly in the south and midlands but expanding into south Wales and some populations in northern England and Scotland.

Chinese Water Deer – *Hydropotes inermis*

ID Features:- A distinctive shape and sandy colour summer coat which goes greyer in the winter. The tail is small and indistinct. They have large ears and the face is similar to roe deer but looks more bear like. It is hard to separate the sexes as both have large canine teeth and have no antlers.

Size:- 50-55cm at the shoulder

Weight:- 11-15kg

Distribution:- Restricted to the East Anglian fens and the area around Woburn.

